

Phaser®  
6280  
A4  
Colour  
Laser Printer



Xerox Phaser® 6280  
Colour Laser Printer  
Impressive colour.  
Impressive price.



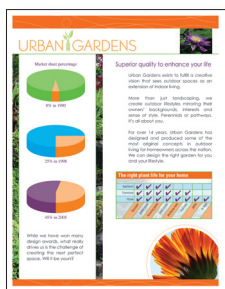
# Phaser® 6280 Colour Laser Printer

**Affordable colour laser printer that delivers for busy work teams.** Spectacular colour printing to give your documents the competitive edge, plus solid performance with built-in networking, advanced colour technology and unparalleled quality, all at a surprisingly low price.

## Performance that keeps up with your busy office

The Phaser 6280 printer can handle all the work your team can give it, with fast colour output and advanced capabilities.

- **Built for speed.** Fast 25 ppm for colour printing and 30 ppm for black and white.
- **Fast first page out.** In as little as 10 seconds.
- **Handle complex documents with ease.** Thanks to 256 MB of printer memory and a powerful 400 MHz processor.
- **Work team-ready.** Enabled with built-in networking and on-board support for Windows, Mac, and Linux.
- **Flexible expansion.** Suited to fit your workload, including an optional hard drive, memory expansion and paper capacity up to 950 sheets.
- **Automatic two-sided printing.** Available with the Phaser 6280DN configuration.
- **Enterprise-ready.** Support includes device management tools such as CentreWare print management software.



Make your point in colour, and customers get it faster and retain it longer.

## Low-cost colour printing for your business

Add outstanding colour to your business documents at an exceptionally low price, with an array of advanced colour printing tools and money-saving features.

- **Outstanding.** 600x600x4 dpi photographic-quality colour at low cost.
- **Pantone® Colour approved solid-colour simulations and Xerox colour correction technology.** Allows the Phaser 6280 automatically prints the right colours or lets you fine-tune for special applications.
- **True Adobe® PostScript® 3™.** Gives you the brightest, truest colours and graphics possible.
- **Bring out the clarity and detail.** It uses smaller, more uniform toner particles than conventional toner in every print with Xerox EA-HG toner.
- **Choose "Run Black".** Enables you to print colour documents in black when colour cartridges are empty.
- **Better manage your printing costs.** The Phaser 6280 tracks the number of colour and black pages you're printing. It also works with third party software to provide more detailed usage monitoring.
- **Paper-saving feature.** It automatically skips blank pages in a document.

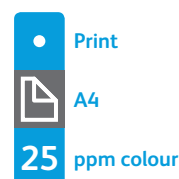
## Quality engineering with world-class Xerox service and support

Xerox precision design and engineering deliver worry-free reliable performance.

- **Well-built, durable construction.** A robust 60,000-pages/month duty cycle can meet the needs of even the busiest work team.
- **You're covered with a one-year on-site warranty.** Providing the best service and support in the industry.
- **Engineered to be quiet.** Low-noise levels make it a great fit for office environments.
- **Printing Scout™.** Tracks your print jobs and provides immediate print-issue alerts with correction suggestions.
- **Environmentally conscious.** The Phaser 6280 is part of the Xerox Green World Alliance recycling programme. Ship your used cartridges to Xerox for free and we'll take care of recycling.
- **Energy Star Qualified.** Saves on office utility bills.

### Phaser® 6280 Quick Facts

- Print up to 25 ppm colour, 30 ppm black and white
- 600 x 600 x 4 dpi
- 400 MHz processor
- 256 MB memory expandable to 1,280 MB
- 60,000 pages/month duty cycle
- 400-sheet capacity, expandable to 950 sheets



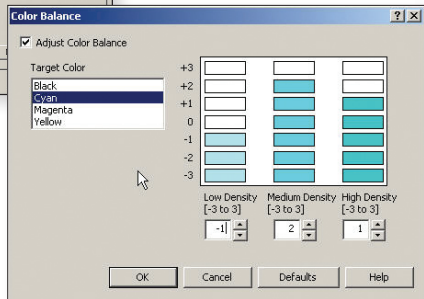
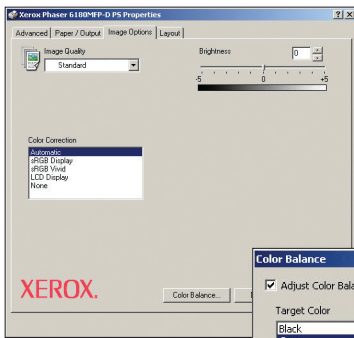
**WxDxH:**  
400 x 490 x 473 mm



- 1 Fast, automatic two-sided printing is standard on the 6280DN configuration.
- 2 Intuitive front panel includes a toner gauge for a quick visual check of current toner levels.

- 3 150-sheet multipurpose tray supports custom sizes from A6 to A4.
- 4 250-sheet main tray feeds paper up to 220 gsm.

- 5 Add an optional 550-sheet feeder to boost total paper capacity to 950 – available as an extra tray or incorporated into a pedestal stand.
- 6 Optional Productivity Kit (includes 40 GB hard drive) provides more print features. Use Secure Print to authenticate users printing confidential documents.



**Print to please.**

The Phaser 6280 boasts advanced colour technology to bring your business documents to life.



**Phaser® 6280 Printer Configurations**

**Phaser 6280N**

- 10/100 Base-T Ethernet and USB connectivity
- 256 MB memory (expandable to 1,280 MB)
- 150-sheet multipurpose tray and 250-sheet input tray for 400-sheet capacity

**Phaser 6280DN**

- 6280N configuration plus:**
- Automatic two-sided printing

**Add Productivity**

- Wireless network adapter
- Additional memory
- Productivity kit with 40 GB hard drive

**Add Paper Handling**

- Automatic two-sided printing (standard on 6280DN)
- 550-sheet feeder
- 550-sheet feeder with stand

# Phaser® 6280

## Colour Laser Printer



	6280N	6280DN
<b>Speed</b>	Up to 25 ppm colour / 30 ppm black and white (A4)	
<b>Duty Cycle</b>	Up to 70,000 pages / month	
<b>Paper Handling</b>	Standard	<b>Multipurpose Tray:</b> 150 sheets; Custom sizes: 76.2 x 127 mm to 216 x 356 mm
		<b>Tray 1:</b> 250 sheets; Custom sizes: 148 x 210 mm to 216 x 356 mm
	Optional	<b>Tray 2:</b> 550 sheets; Custom sizes: 148 x 210 mm to 216 x 356 mm
Paper output	300 sheets	
Automatic two-sided printing	Optional	Standard
<b>Print</b>		
First-page-out-time	As fast as 10 seconds	
Resolution (max)	Up to 600 x 600 x 4 dpi	
Processor	400 MHz	
Memory (std / max)	256 MB / 1,280 MB	
Connectivity	USB 2.0, 10/100 Base-TX Ethernet, Optional wireless network adaptor	
Page description languages	PCL® 6, PCL® 5e, Adobe® PostScript® 3™, IPV6	
Print features	Standard	N-up, Fit to page, Booklet printing, Skip blank pages, Transparency separators, Run black, Covers/Separators*, Poster printing*, Watermarks*, Overlays*, Banner sheets*, Draft mode*
	Optional	Productivity Kit (includes 40 GB hard drive) enables secure / proof / personal / saved print, Hard disk collation, Print With, PDF-direct printing, Extended font / form storage
<b>Security</b>	IPSec, SNMPv3, IP Filtering, HTTPS/SSL, 802.1x, Secure Print (with additional memory or hard drive option), password protected administrative settings	
<b>Warranty</b>	One-year on-site warranty	

\* Accessed via PCL Driver

\*\* Requires optional memory or hard drive

### Device Management

Phaser Installer, CentreWare® IS Embedded Web Server, CentreWare Web, PrintingScout™, Email alerts

### Print Drivers

Windows® 2000/XP/Vista, Server 2003/2008, Xerox Global Print Driver, Xerox Mobile Express Driver, Mac OS® version 10.3 and above, Linux: SUSE™, Red Hat®, TurboLinux 10 Desktop

### Font Capability

136 PostScript® fonts; 81 PCL® fonts

### Media Handling

Multipurpose Tray, Tray 2, Tray 3 (optional): 65 – 220 gsm  
Media types: Plain paper, glossy, envelopes, labels, transparencies, cardstock, postcards, Two sided printing: 65 – 163 gsm

### Colour Standards

PANTONE® Colour approved solid-colour simulations, Colour Correction, ICC Profile, Colour Sync

### Operating Environment

Temperature: Storage: -20° to 40° C  
Operating: 10° to 32° C  
Humidity: 5% to 85%  
Sound pressure levels:  
Printing: 51.4 dB(A)  
Standby: 30.1 dB(A)  
Sound power levels:  
Printing: 6.33 B, Standby: 4 B  
Warm-up time (from sleep mode): 30 seconds

### Electrical

Power: 220–240 VAC, 50/60 Hz  
Power consumption:  
Standby: 70 W  
Printing: 450 W  
Power save: 4.3 W  
ENERGY STAR® qualified

### Dimensions (WxDxH)

6280N: 400 x 490 x 473 mm  
Weight: 24.5 kg  
Package Dimensions (WxDxH):  
560 x 650 x 600 mm  
Weight: 29.7 kg  
6280DN: 400 x 490 x 473 mm  
Weight: 29.25 kg  
Optional 550-sheet Tray 2: 364 x 400 x 86 mm

### Certifications

FCC Part 15, Class B, Listed UL 60950-1/CSA 60950-1-03, CE Mark applicable to Directives 2006/95/EC and 2004/108/EC, Section 508 ADA

### What comes in the box

- Phaser 6280 Printer
- Print Cartridge (2,200 (CMY) print capacity<sup>1</sup>, (3,000 (K) print capacity<sup>1</sup>)
- Software and Documentation CD (with User Manual, Quick Installation Guide, Registration Card, Warranty Statement)
- Power cord

### Supplies Recycling Programme

Consumables for the Phaser 6280 are part of the Xerox Green World Alliance Supplies Recycling Programme. For more information, please visit the Green World Alliance website at [www.xerox.com/gwa](http://www.xerox.com/gwa)

### Supplies

Standard-Capacity Print Cartridge <sup>1</sup> :	
Black: 3,000 std. pages	106R01391
Cyan: 2,200 std. pages	106R01388
Magenta: 2,200 std. pages	106R01389
Yellow: 2,200 std. pages	106R01390
High-Capacity Print Cartridge <sup>1</sup> :	
Black: 7,000 std. pages	106R01403
Cyan: 5,900 std. pages	106R01400
Magenta: 5,900 std. pages	106R01401
Yellow: 5,900 std. pages	106R01402
<b>Options</b>	
550-sheet feeder	097S03744
550-sheet pedestal stand/feeder	097S03833
512 MB Phaser Memory	097S03635
Duplex unit (6280N)	097S03746
Wireless network adapter	
- European power converter	097S03741
- UK power converter	097S03742



Call today. For more information visit us at [www.xerox.com/office](http://www.xerox.com/office)



© 2008 Xerox Corporation. All rights reserved. Contents of this publication may not be reproduced in any form without permission of Xerox Corporation. XEROX®, CentreWare®, Phaser® and the sphere of connectivity design are trademarks of Xerox Corporation in the U.S. and/or other countries. Adobe® and PostScript® 3™ are registered trademarks or trademarks of Adobe Systems, Incorporated. PCL® is a registered trademark of Hewlett-Packard. As an ENERGY STAR® partner, Xerox Corporation has determined that this product meets the ENERGY STAR guidelines for energy efficiency. ENERGY STAR and the ENERGY STAR mark are registered U.S. marks. All other trademarks are the property of their respective manufacturers. The information in this brochure is subject to change without notice. 9/08

628BR-011A